






B. Wylie

Worklist: 1153

<u>LAB_CASE</u>	<u>ITEM</u>	<u>TASK_ID</u>	<u>DESCRIPTION</u>	
C2016-0764	1	58376	6.1.2 Blood Cannabinoids by LC	
M2016-0569	1	58377	6.1.2 Blood Cannabinoids by LC	
M2016-0971	1	58378	6.1.2 Blood Cannabinoids by LC	
M2016-1315	1	58379	6.1.2 Blood Cannabinoids by LC	
P2016-0758	1	58380	6.1.2 Blood Cannabinoids by LC	

Worklist Report

Worklist Path:	C:\MassHunter\ISP Methods\worklists\CS Combined 060716.wkl
Date Modified:	06/07/2016 03:25:37 PM
Date Printed:	06/07/2016 03:25:46 PM

Worklist Run Parameters

Operator Name:	62340
Run Type:	Standard Start
Part of Method to Run:	Acquisition Only
Execution for Acquisition-DA:	Synchronous
Acquisition Method Path:	C:\MassHunter\ISP Methods\Acquisition
DA Method Path:	D:\MassHunter\methods
Data File Path:	C:\MassHunter\Data\2016\Combined\060716 CS
Pre-Worklist Script:	---
Post-Worklist Script:	SCP_InstrumentStandby(){MH_Acq_Scripts.exe}
Acquisition Clean Up Script:	SCP_InstrumentStandby(){MH_Acq_Scripts.exe}
Overlapped Injection:	No
Clear sample selection after run:	Yes
Wait Time for Ready(Min):	10
Threshold Disk Value(GB):	10
Comment:	---


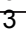

Plate Barcode Information

Plate	Barcode
P1	
P2	

Worklist Table

Sample Position	Sample Name	Method	Data File	Sample Type	Level Name	Comment	Info.
P2-A1	Blank	isp blood cannabinoids Poky 2016-1.m	Blank1-r000.d	Blank		AM 6.1.2 Cannabinoids by LCQQQ	
P2-A1	Blank	isp blood cannabinoids Poky 2016-1.m	Blank1-r001.d	Blank		AM 6.1.2 Cannabinoids by LCQQQ	
P2-A1	Blank	isp blood cannabinoids Poky 2016-1.m	Blank2-r001.d	Blank		AM 6.1.2 Cannabinoids by LCQQQ	
P2-A2	Blood: 1_5 ngmL	isp blood cannabinoids Poky 2016-1.m	B_CAL1-r001.d	Calibration	1	AM 6.1.2 Cannabinoids by LCQQQ	c-THC @5ng/mL, all others @1 ng/mL
P2-A3	Blood: 2_10 ngmL	isp blood cannabinoids Poky 2016-1.m	B_CAL2_r001.d	Calibration	2	AM 6.1.2 Cannabinoids by LCQQQ	c-THC @10ng/mL, all others @2 ng/mL
P2-A4	Blood: 5_25 ngmL	isp blood cannabinoids Poky 2016-1.m	B_CAL3_r001.d	Calibration	3	AM 6.1.2 Cannabinoids by LCQQQ	c-THC @25ng/mL, all others @5 ng/mL
P2-A5	Blood: 10_50 ngmL	isp blood cannabinoids Poky 2016-1.m	B_CAL4_r001.d	Calibration	4	AM 6.1.2 Cannabinoids by LCQQQ	c-THC @50ng/mL, all

Sample Position	Sample Name	Method	Data File	Sample Type	Level Name	Comment	Info. ☺
							others @10 ng/mL
P2-A6	Blood: 25_125 ng/mL	isp blood cannabinoids Poky 2016-1.m	B_CAL5_r001.d	Calibration	5	AM 6.1.2 Cannabinoids by LCQQQ	c-THC @125ng/mL, all others @25 ng/mL
P2-A7	Blood: 50_250 ng/mL	isp blood cannabinoids Poky 2016-1.m	B_CAL6_r001.d	Calibration	6	AM 6.1.2 Cannabinoids by LCQQQ	c-THC @250ng/mL, all others @50 ng/mL
P2-A8	Blood: 100_500 ng/mL	isp blood cannabinoids Poky 2016-1.m	B_CAL7_r001.d	Calibration	7	AM 6.1.2 Cannabinoids by LCQQQ	c-THC @500ng/mL, all others @100 ng/mL
P2-A1	Blank	isp blood cannabinoids Poky 2016-1.m	Carryover blank1_r001.d	Blank		AM 6.1.2 Cannabinoids by LCQQQ	
P2-A9	Blood Negative Control	isp blood cannabinoids Poky 2016-1.m	B-NC-r001.d	Sample		UTAK B1013	Negative Blood UTAK Lot B0689 ☺ B1013
P2-B1	Blood Positive Control 1	isp blood cannabinoids Poky 2016-1.m	B-PC1-r001.d	Sample		UTAK B1013 + WS060716	c-THC @15ng/mL, all others @3 ng/mL
P2-A1	Blank	isp blood cannabinoids Poky 2016-1.m	Carryover blank2_r001.d	Blank		AM 6.1.2 Cannabinoids by LCQQQ	
P2-A9	Blank C2016-0764-1	isp blood cannabinoids Poky 2016-1.m	C2016-0764-1_BLK_r001.d	Blank		AM 6.1.2 Cannabinoids by LCQQQ	
P2-B2	C2016-0764-1	isp blood cannabinoids Poky 2016-1.m	C2016-0764-1-r001.d	Sample		AM 6.1.2 Cannabinoids by LCQQQ	Blood
P2-A9	Blank M2016-0569-1	isp blood cannabinoids Poky 2016-1.m	M2016-0569-1_BLK_r001.d	Blank		AM 6.1.2 Cannabinoids by LCQQQ	
P2-B3	M2016-0569-1	isp blood cannabinoids Poky 2016-1.m	M2016-0569-1-r001.d	Sample		AM 6.1.2 Cannabinoids by LCQQQ	Blood
P2-A9	Blank M2016-0971-1	isp blood cannabinoids Poky 2016-1.m	M2016-0971-1_BLK_r001.d	Blank		AM 6.1.2 Cannabinoids by LCQQQ	
P2-B4	M2016-0971-1	isp blood cannabinoids Poky 2016-1.m	M2016-0971-1-r001.d	Sample		AM 6.1.2 Cannabinoids by LCQQQ	Blood
P2-A1	Blank	isp blood cannabinoids Poky 2016-1.m	cann-Carryover blank3_r001.d	Blank		AM 6.1.2 Cannabinoids by LCQQQ	
P2-C3	Blood Positive Control 2	isp blood cannabinoids Poky 2016-1.m	cann-B-PC2-r001.d	Sample		UTAK B1013 + WS060716	e-THC @125ng/mL, all others @25 ng/mL*
P2-A1	Blank	isp blood cannabinoids Poky 2016-1.m	Carryover blank4_r001.d	Blank		AM 6.1.2 Cannabinoids by LCQQQ	*c-THC @ 250ng/mL and others at 50ng/mL ☺
P2-A9	Blank M2016-1315-1	isp blood cannabinoids Poky 2016-1.m	M2016-1315-1_BLK_r001.d	Blank		AM 6.1.2 Cannabinoids by LCQQQ	
P2-B5	M2016-1315-1	isp blood cannabinoids Poky 2016-1.m	M2016-1315-1-r001.d	Sample		AM 6.1.2 Cannabinoids by LCQQQ	Blood
P2-A9		isp blood cannabinoids Poky 2016-1.m		Blank			

Sample Position	Sample Name	Method	Data File	Sample Type	Level Name	Comment	Info. 
	Blank P2016-0758-1		P2016-0758-1_BLK_r001.d			AM 6.1.2 Cannabinoids by LCQQQ	
P2-B6	P2016-0758-1	isp blood cannabinoids Poky 2016-1.m	P2016-0758-1-r001.d	Sample		AM 6.1.2 Cannabinoids by LCQQQ	Blood
P2-A1	Blank	isp blood cannabinoids Poky 2016-1.m	Blank3-r001.d	Blank		AM 6.1.2 Cannabinoids by LCQQQ	Blood
P1-F9	Blank	Benzos_Z_Drugs_ACN_FA_ISP_2016.m	BZ-Blank1-r001.d	Blank		AM 6.1.2 Cannabinoids by LCQQQ	Blood
P1-F9	Blank	Benzos_Z_Drugs_ACN_FA_ISP_2016.m	BZ-Blank2-r001.d	Blank		AM 6.1.2 Cannabinoids by LCQQQ	Blood
P1-F8	5 ng/mL	Benzos_Z_Drugs_ACN_FA_ISP_2016.m	BZ-5 ng/mL-r001.d	Calibration	1	AM 6.1.2 Cannabinoids by LCQQQ	Blood
P1-F7	10 ng/mL	Benzos_Z_Drugs_ACN_FA_ISP_2016.m	BZ-10 ng/mL-r001.d	Calibration	2	AM 6.1.1 Benzo and Z by LCQQQ	
P1-F6	25 ng/mL	Benzos_Z_Drugs_ACN_FA_ISP_2016.m	BZ-25 ng/mL_r001.d	Calibration	3	AM 6.1.1 Benzo and Z by LCQQQ	
P1-F5	50 ng/mL	Benzos_Z_Drugs_ACN_FA_ISP_2016.m	BZ-50 ng/mL_r001.d	Calibration	4	AM 6.1.1 Benzo and Z by LCQQQ	
P1-F4	100 ng/mL	Benzos_Z_Drugs_ACN_FA_ISP_2016.m	BZ-100 ng/mL_r001.d	Calibration	5	AM 6.1.1 Benzo and Z by LCQQQ	
P1-F3	500 ng/mL	Benzos_Z_Drugs_ACN_FA_ISP_2016.m	BZ-500 ng/mL_r001.d	Calibration	6	AM 6.1.1 Benzo and Z by LCQQQ	
P1-F2	1000 ng/mL	Benzos_Z_Drugs_ACN_FA_ISP_2016.m	BZ-1000 ng/mL_r001.d	Calibration	7	AM 6.1.1 Benzo and Z by LCQQQ	
P1-F1	3000 ng/mL	Benzos_Z_Drugs_ACN_FA_ISP_2016.m	BZ-3000 ng/mL_r001.d	Calibration	8	AM 6.1.1 Benzo and Z by LCQQQ	
P1-F9	Blank	Benzos_Z_Drugs_ACN_FA_ISP_2016.m	BZ-Carryover blank1_r001.d	Blank		AM 6.1.1 Benzo and Z by LCQQQ	
P1-E9	Negative Blood Control	Benzos_Z_Drugs_ACN_FA_ISP_2016.m	BZ-NC-B_r001.d	Sample		UTAK B1013	UTAK Negative Whole Blood LOT B0689  200 ng/mL
P1-E8	Positive Blood Control	Benzos_Z_Drugs_ACN_FA_ISP_2016.m	BZ-PC-B-r001.d	Sample		UTAK B1013 + WS060716	Benzodiazepines Mix Cerilliant lot FE012413-02 in neg LOT B0430 
P1-E9	Blank - C2016-0001-1	Benzos_Z_Drugs_ACN_FA_ISP_2016.m	BZ-Carryover blank-C2016-0001-1_r001.d	Blank		AM 6.1.1 Benzo and Z by LCQQQ	B1013 
P1-E7	C2016-0001-1	Benzos_Z_Drugs_ACN_FA_ISP_2016.m	BZ-C2016-0001-1-r001.d	Sample		AM 6.1.1 Benzo and Z by LCQQQ	Blood
P1-E9	Blank - M2016-0194-1	Benzos_Z_Drugs_ACN_FA_ISP_2016.m	BZ-Carryover blank-M2016-0194-1_r001.d	Blank		AM 6.1.1 Benzo and Z by LCQQQ	
P1-E6	M2016-0194-1	Benzos_Z_Drugs_ACN_FA_ISP_2016.m	BZ-M2016-0194-1-r001.d	Sample		AM 6.1.1 Benzo and Z by LCQQQ	Blood

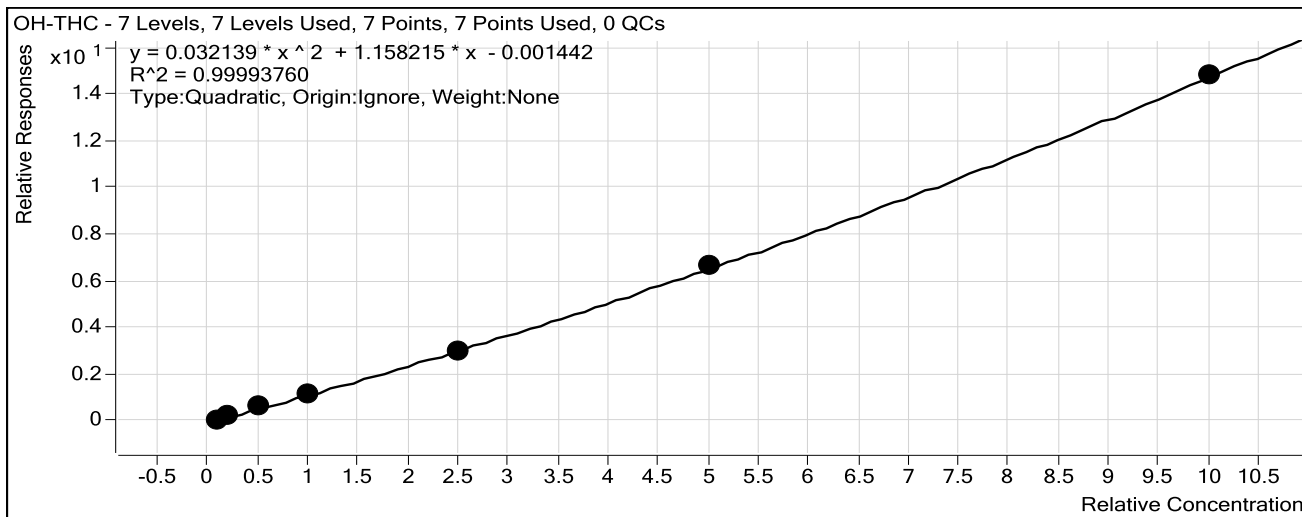
Sample Position	Sample Name	Method	Data File	Sample Type	Level Name	Comment	Info. ۞
P1-E9	Blank - M2016-0202-1	Benzos_Z_Drugs_ACN_FA_ISP_2016.m	BZ-Carryover blank-M2016-0202-1_r001.d	Blank		AM 6.1.1 Benzo and Z by LCQQQ	
P1-E5	M2016-0202-1	Benzos_Z_Drugs_ACN_FA_ISP_2016.m	BZ-M2016-0202-1-r001.d	Sample		AM 6.1.1 Benzo and Z by LCQQQ	Blood
P1-E9	Blank - P2016-0145-1	Benzos_Z_Drugs_ACN_FA_ISP_2016.m	BZ-Carryover blank-P2016-0145-1_r001.d	Blank		AM 6.1.1 Benzo and Z by LCQQQ	
P1-E4	P2016-0145-1	Benzos_Z_Drugs_ACN_FA_ISP_2016.m	BZ-P2016-0145-1-r001.d	Sample		AM 6.1.1 Benzo and Z by LCQQQ	Blood
P1-E9	Blank - P2016-0149-1	Benzos_Z_Drugs_ACN_FA_ISP_2016.m	BZ-Carryover blank-P2016-0149-1_r001.d	Blank		AM 6.1.1 Benzo and Z by LCQQQ	
P1-E3	P2016-0149-1	Benzos_Z_Drugs_ACN_FA_ISP_2016.m	BZ-P2016-0149-1-r001.d	Sample		AM 6.1.1 Benzo and Z by LCQQQ	Blood
P1-E9	Blank - M2016-0971-1	Benzos_Z_Drugs_ACN_FA_ISP_2016.m	BZ-Carryover blank-M2016-0971-1_r001.d	Blank		AM 6.1.1 Benzo and Z by LCQQQ	
P1-E2	M2016-0971-1	Benzos_Z_Drugs_ACN_FA_ISP_2016.m	BZ-M2016-0971-1-r001.d	Sample		AM 6.1.1 Benzo and Z by LCQQQ	Blood
P1-E9	Blank - P2016-0274-1	Benzos_Z_Drugs_ACN_FA_ISP_2016.m	BZ-Carryover blank-P2016-0274-1_r001.d	Blank		AM 6.1.1 Benzo and Z by LCQQQ	
P1-E1	P2016-0274-1	Benzos_Z_Drugs_ACN_FA_ISP_2016.m	BZ-P2016-0274-1-r001.d	Sample		AM 6.1.1 Benzo and Z by LCQQQ	Blood
P1-E9	Blank - P2016-0491-1	Benzos_Z_Drugs_ACN_FA_ISP_2016.m	BZ-Carryover blank-P2016-0491-1_r001.d	Blank		AM 6.1.1 Benzo and Z by LCQQQ	
P1-D9	P2016-0491-1	Benzos_Z_Drugs_ACN_FA_ISP_2016.m	BZ-P2016-0491-1-r001.d	Sample		AM 6.1.1 Benzo and Z by LCQQQ	Blood
P1-F9	Blank	Benzos_Z_Drugs_ACN_FA_ISP_2016.m	BZ-Carryover blank3_r001.d	Blank		AM 6.1.1 Benzo and Z by LCQQQ	

ISP Forensics Calibration Curve Report

Batch Data Path C:\MassHunter\Data\2016\Combined\060716 CS rerun\QuantResults\060716 Cannab
Rerun.batch.bin

Last Calib Update 6/10/2016 9:23 AM **Analyst Name** ISP TOX

Target Compound *OH-THC*
Internal Standard *OH-THC-d3*



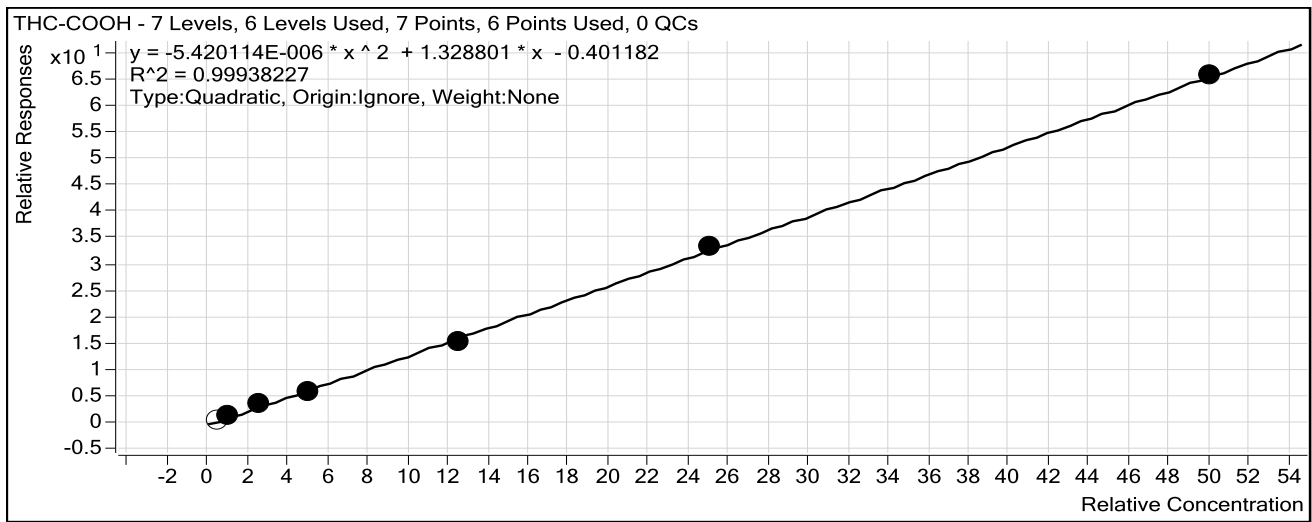
Sample	Level	Enabled	Exp Conc	Final Conc	Accuracy
Blood: 1_5 ng/mL	1	<input checked="" type="checkbox"/>	1	0.8	80.9
Blood: 2_10 ng/mL	2	<input checked="" type="checkbox"/>	2	2.0	100.6
Blood: 5_25 ng/mL	3	<input checked="" type="checkbox"/>	5	5.6	112.6
Blood: 10_50 ng/mL	4	<input checked="" type="checkbox"/>	10	9.7	97.0
Blood: 25_125 ng/mL	5	<input checked="" type="checkbox"/>	25	24.7	98.6
Blood: 50_250 ng/mL	6	<input checked="" type="checkbox"/>	50	50.2	100.5
Blood: 100_500 ng/mL	7	<input checked="" type="checkbox"/>	100	100.0	100.0

ISP Forensics Calibration Curve Report

Batch Data Path C:\MassHunter\Data\2016\Combined\060716 CS rerun\QuantResults\060716 Cannab
Rerun.batch.bin

Last Calib Update 6/10/2016 9:23 AM **Analyst Name** ISP TOX

Target Compound *THC-COOH*
Internal Standard *THC-COOH-d3*



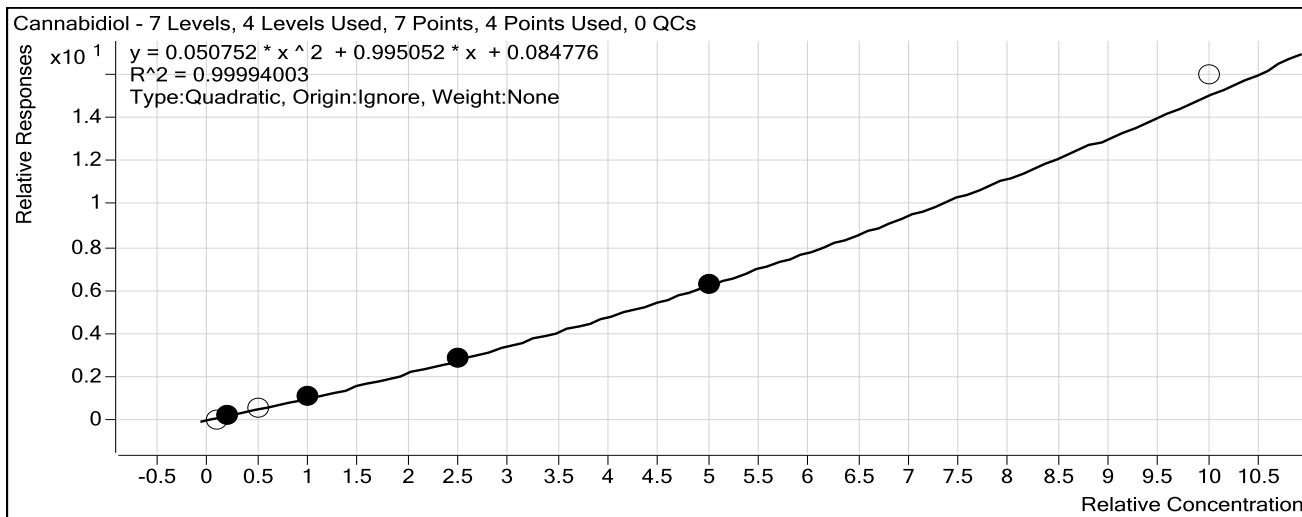
Sample	Level	Enabled	Exp Conc	Final Conc	Accuracy
Blood: 1_5 ng/mL	1	<input type="checkbox"/>	5	6.5	129.8
Blood: 2_10 ng/mL	2	<input checked="" type="checkbox"/>	10	11.8	117.6
Blood: 5_25 ng/mL	3	<input checked="" type="checkbox"/>	25	28.4	113.6
Blood: 10_50 ng/mL	4	<input checked="" type="checkbox"/>	50	47.5	95.1
Blood: 25_125 ng/mL	5	<input checked="" type="checkbox"/>	125	117.5	94.0
Blood: 50_250 ng/mL	6	<input checked="" type="checkbox"/>	250	255.7	102.3
Blood: 100_500 ng/mL	7	<input checked="" type="checkbox"/>	500	499.1	99.8

ISP Forensics Calibration Curve Report

Batch Data Path C:\MassHunter\Data\2016\Combined\060716 CS rerun\QuantResults\060716 Cannab
Rerun.batch.bin

Last Calib Update 6/10/2016 9:23 AM **Analyst Name** ISP TOX

Target Compound *Cannabidiol*
Internal Standard *Cannabidiol-d3*

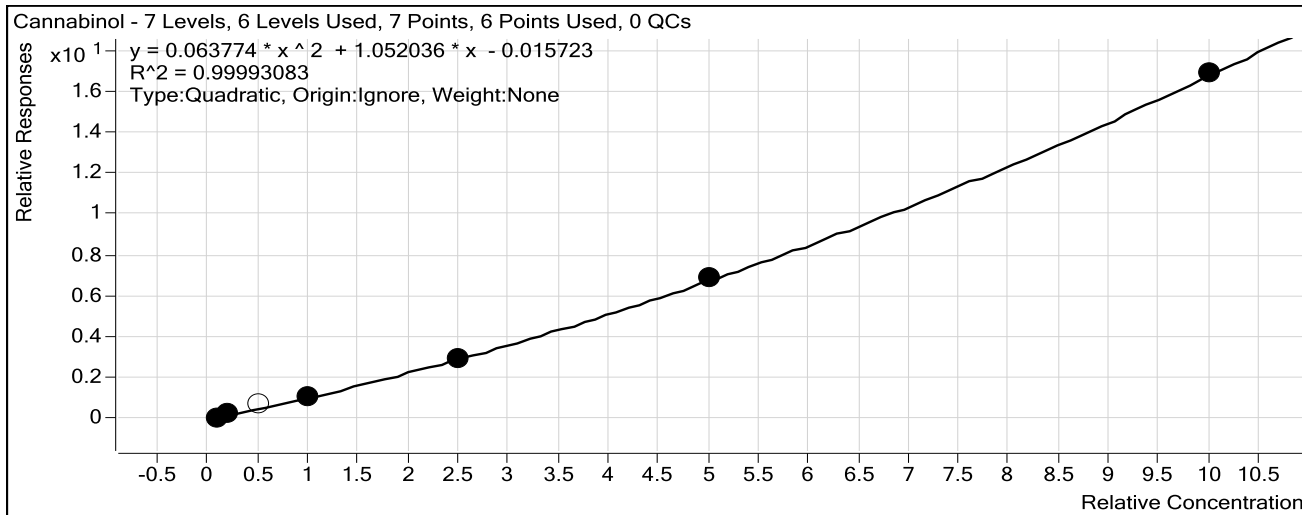


Sample	Level	Enabled	Exp Conc	Final Conc	Accuracy
Blood: 1_5 ng/mL	1	<input type="checkbox"/>	1	0.1	8.1
Blood: 2_10 ng/mL	2	<input checked="" type="checkbox"/>	2	1.8	92.4
Blood: 5_25 ng/mL	3	<input type="checkbox"/>	5	4.9	98.6
Blood: 10_50 ng/mL	4	<input checked="" type="checkbox"/>	10	10.3	102.6
Blood: 25_125 ng/mL	5	<input checked="" type="checkbox"/>	25	24.9	99.5
Blood: 50_250 ng/mL	6	<input checked="" type="checkbox"/>	50	50.0	100.0
Blood: 100_500 ng/mL	7	<input type="checkbox"/>	100	104.0	104.0

ISP Forensics Calibration Curve Report

Batch Data Path C:\MassHunter\Data\2016\Combined\060716 CS rerun\QuantResults\060716 Cannab Rerun.batch.bin
Last Calib Update 6/10/2016 9:23 AM **Analyst Name** ISP TOX

Target Compound *Cannabinol*
Internal Standard *Cannabinol-d3*



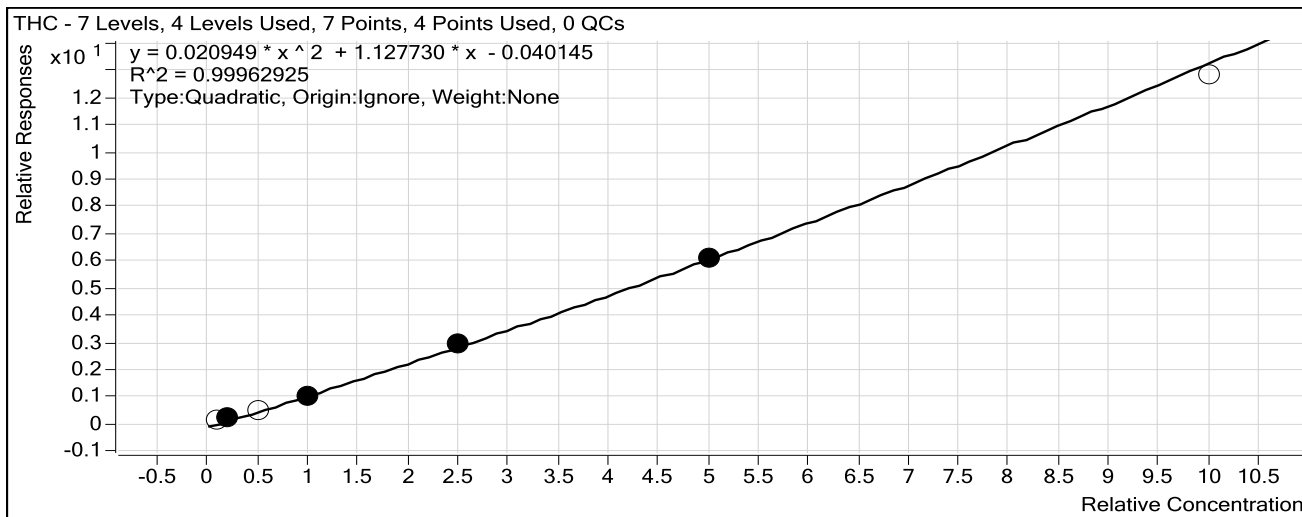
Sample	Level	Enabled	Exp Conc	Final Conc	Accuracy
Blood: 1_5 ng/mL	1	<input checked="" type="checkbox"/>	1	1.0	101.4
Blood: 2_10 ng/mL	2	<input checked="" type="checkbox"/>	2	2.3	116.8
Blood: 5_25 ng/mL	3	<input type="checkbox"/>	5	6.9	137.9
Blood: 10_50 ng/mL	4	<input checked="" type="checkbox"/>	10	10.0	99.9
Blood: 25_125 ng/mL	5	<input checked="" type="checkbox"/>	25	24.3	97.3
Blood: 50_250 ng/mL	6	<input checked="" type="checkbox"/>	50	50.4	100.8
Blood: 100_500 ng/mL	7	<input checked="" type="checkbox"/>	100	100.0	100.0

ISP Forensics Calibration Curve Report

Batch Data Path C:\MassHunter\Data\2016\Combined\060716 CS rerun\QuantResults\060716 Cannab
Rerun.batch.bin

Last Calib Update 6/10/2016 9:23 AM **Analyst Name** ISP TOX

Target Compound *THC*
Internal Standard *THC-d3*



Sample	Level	Enabled	Exp Conc	Final Conc	Accuracy
Blood: 1_5 ng/mL	1	<input type="checkbox"/>	1	2.1	206.4
Blood: 2_10 ng/mL	2	<input checked="" type="checkbox"/>	2	2.3	116.4
Blood: 5_25 ng/mL	3	<input type="checkbox"/>	5	5.2	103.6
Blood: 10_50 ng/mL	4	<input checked="" type="checkbox"/>	10	9.4	94.1
Blood: 25_125 ng/mL	5	<input checked="" type="checkbox"/>	25	25.3	101.2
Blood: 50_250 ng/mL	6	<input checked="" type="checkbox"/>	50	49.9	99.9
Blood: 100_500 ng/mL	7	<input type="checkbox"/>	100	96.6	96.6

6

ISP FORENSICS

Pocatello

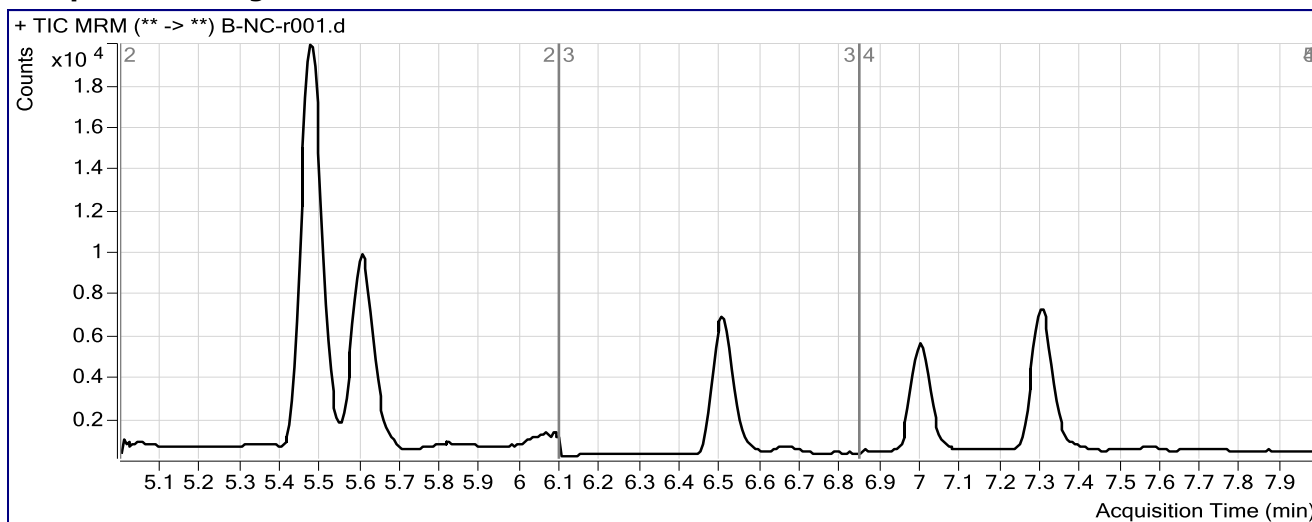
Cannabinoid Analysis Report

Batch Data Path	C:\MassHunter\Data\2016\Combined\060716 CS rerun\QuantResults\060716 Cannab Rerun.batch		
Analysis Time	6/10/2016 9:24 AM	Analyst Name	ISPUser
Report Time	6/10/2016 9:31 AM	Reporter Name	ISPUser
Last Calib Update	6/10/2016 9:23 AM	Batch State	Processed

Analysis Info

Acq Time	2016-06-09 13:09	Data File	B-NC-r001.d
Sample Type	Sample	Sample Name	Blood Negative Control
Dilution	1	Acq Method	isp blood cannabinoids Poky 2016-1.m
Position	P2-A9	Sample Info	Negative Blood UTAK Lot B0689- B1013 6
Inj Vol	-1	Comment	UTAK B1013

Sample Chromatogram



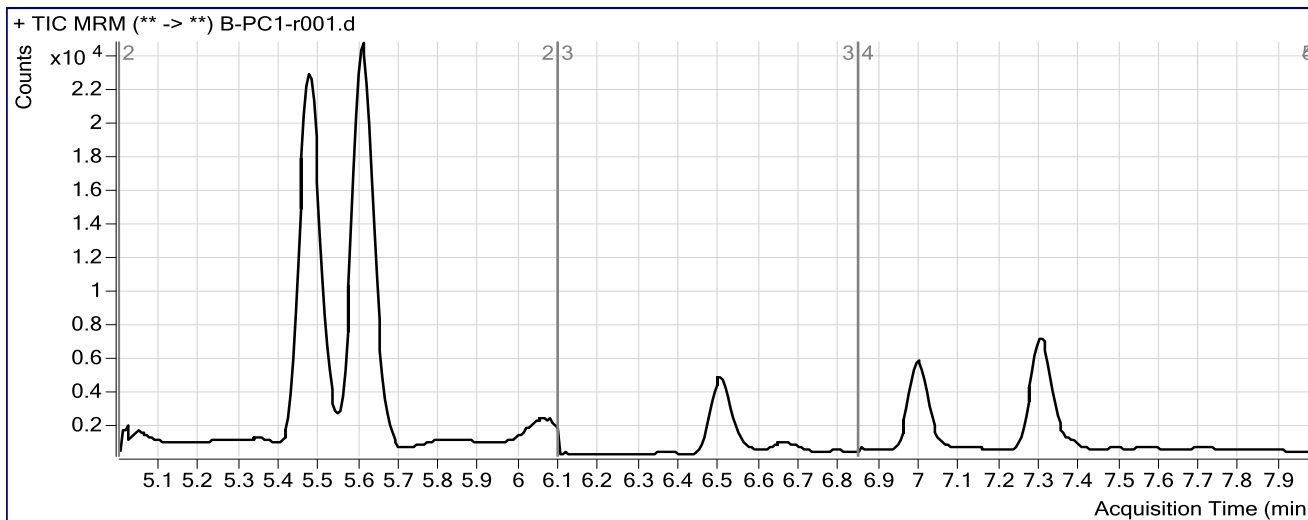
ISP FORENSICS Pocatello Cannabinoid Analysis Report

Batch Data Path	C:\MassHunter\Data\2016\Combined\060716 CS rerun\QuantResults\060716 Cannab Rerun.batch.bin		
Analysis Time	6/10/2016 9:24 AM	Analyst Name	ISPUser
Report Time	6/10/2016 9:31 AM	Reporter Name	ISPUser
Last Calib Update	6/10/2016 9:23 AM	Batch State	Processed

Analysis Info

Acq Time	2016-06-09 13:23	Data File	B-PC1-r001.d
Sample Type	Sample	Sample Name	Blood Positive Control 1
Dilution	1	Acq Method	isp blood cannabinoids Poky 2016-1.m
Position	P2-B1	Sample Info	c-THC @15ng/mL, all others @3 ng/mL
Inj Vol	-1	Comment	UTAK B1013 + WS060716

Sample Chromatogram



Results

Compound	ISTD Compound	RT	Response	ISTD Resp	Resp Ratio	Final Conc
THC-COOH	THC-COOH-d3	5.614	19516	14429	1.3526	13.1980
Cannabinol	Cannabinol-d3	7.000	3665	10815	0.3388	3.3041
THC	THC-d3	7.306	2844	9226	0.3082	3.0717

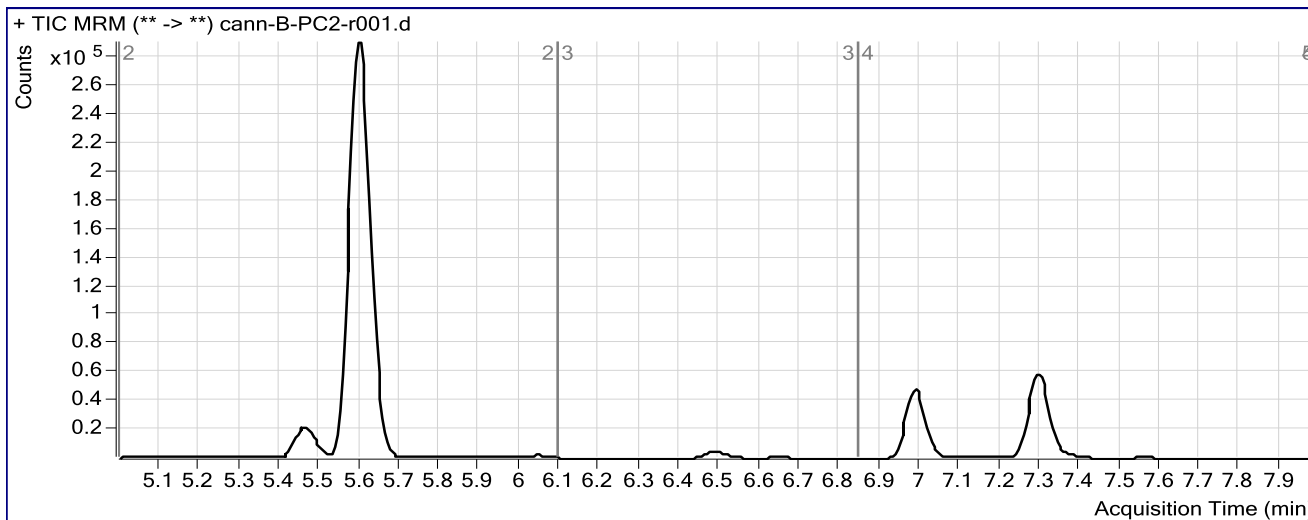
ISP FORENSICS Pocatello Cannabinoid Analysis Report

Batch Data Path C:\MassHunter\Data\2016\Combined\060716 CS rerun\QuantResults\060716 Cannab Rerun.batch.bin
Analysis Time 6/10/2016 9:24 AM **Analyst Name** ISPUser
Report Time 6/10/2016 9:32 AM **Reporter Name** ISPUser
Last Calib Update 6/10/2016 9:23 AM **Batch State** Processed

Analysis Info

Acq Time 2016-06-09 15:22 **Data File** cann-B-PC2-r001.d
Sample Type Sample **Sample Name** Blood Positive Control 2
Dilution 1 **Acq Method** isp blood cannabinoids Poky 2016-1.m
Position P2-C3 **Sample Info** -c-THC @ 125ng/mL, all others @ 25 ng/mL- c-THC @ 250ng/mL, others at 50ng/mL
Inj Vol -1 **Comment** UTAK B1013 + WS060716

Sample Chromatogram



Results

Compound	ISTD Compound	RT	Response	ISTD Resp	Resp Ratio	Final Conc
THC-COOH	THC-COOH-d3	5.603	399225	12723	31.3786	239.1850
Cannabidiol	Cannabidiol-d3	6.497	0	9824	0.0000	0.0000
Cannabinol	Cannabinol-d3	6.989	103919	13465	7.7175	55.1018
THC	THC-d3	7.294	74985	11869	6.3175	51.4573